

# Hysteresis and tunability characteristics of Ba(Zr,Ti)O<sub>3</sub> ceramics described by First Order Reversal Curves diagrams

L. Mitoseriu<sup>a,b,\*</sup>, C.E. Ciomaga<sup>a</sup>, V. Buscaglia<sup>c</sup>, L. Stoleriu<sup>a</sup>, D. Piazza<sup>d</sup>,  
C. Galassi<sup>d</sup>, A. Stancu<sup>a</sup>, P. Nanni<sup>b</sup>

<sup>a</sup> Department of Solid State and Theoretical Physics, Al. I. Cuza University, Bv. Carol I, 11, Iasi 700506, Romania

<sup>b</sup> Department of Chemical and Process Engineering, University of Genoa, P-le Kennedy, 1, Genoa I-16129, Italy

<sup>c</sup> Institute for Energetics and Interphases-CNR, Via de Marini, 6, Genoa I-16149, Italy

<sup>d</sup> Institute of Science and Technology of Ceramics-CNR, Via Granarolo, 64, Faenza I-48018, Italy

Available online 19 March 2007

## Abstract

The First Order Reversal Curves (FORC) diagrams method is proposed for the characterization of the switching process and ac-tunability in BaZr<sub>0.10</sub>Ti<sub>0.90</sub>O<sub>3</sub> ceramics prepared via solid state reaction. The properties induced by different microstructures, having two extreme grain sizes of 0.75 and 3.3 μm are investigated by monitoring the changes of the FORC diagrams. The maximum of FORC distribution is located at low fields independently on the grain size and no clear separation between the reversible/irreversible contributions to the polarization are found. A higher degree of the local inhomogeneity is characteristic to the fine ceramic. The FORC susceptibility related to the ac-tunability determined on the major hysteresis loop is very sensitive to the grain size: it is much smaller in the fine material, due to the pinning of the domain walls by different types of defective areas.

© 2007 Elsevier Ltd. All rights reserved.

**Keywords:** Ferroelectric properties; Tunability; BaTiO<sub>3</sub>; Titanates

## 1. Introduction

Environmental concerns are a contributing factor driving the exploration for lead-free piezoelectric and dielectric materials, taking into account the high toxicity of lead oxide and its high vapour pressure during processing.<sup>1,2</sup> BaTiO<sub>3</sub>-based solid solutions represent an alternative for the replacement of Pb-based piezoceramics. Substitution of other ions for host cations at the A or B site in BaTiO<sub>3</sub> perovskite cell leads to remarkable changes of its characteristics.<sup>3,4</sup> Due to excellent dielectric and promising piezoelectric/electrostrictive properties,<sup>5</sup> BaTi<sub>1-x</sub>Zr<sub>x</sub>O<sub>3</sub> (BZT) ceramics<sup>6,7</sup> and thin films<sup>5,8,9</sup> became attractive for multi-layer ceramics capacitors and piezoelectric sensors/actuators applications.<sup>5-9</sup> As other BaTiO<sub>3</sub>-based systems, BZT solid

solutions are also electric field-tunable dielectrics with potential use in devices for wireless communications as variable capacitors, phase shifters and voltage-controlled oscillators.<sup>10</sup> The ferroelectric properties of BZT are largely dependent on the amount of Zr substitution.<sup>6,7,11</sup> The system exhibits a pinched phase transition with increasing Zr concentration (at  $x \approx 0.15$ , the three phase transitions are merged into one broad peak). Normal ferroelectric behavior was observed for  $0 < x < 0.1$ , relaxor when  $x > 0.25$  and antiferroelectric properties for high Zr addition. These limits are sensitive to the preparation method, to the presence of secondary phases and to the microstructural characteristics as porosity degree, grain size, etc. For a given composition it is interesting to see how these parameters affect the ferroelectric and tunability properties.

The tunability of a ferroelectric describes the ability to change its permittivity by the electric field. This property is directly related to the non-linear variation of polarization (and implicitly of the permittivity) with the applied field. The field-induced polarization  $P(E)$  is accompanied by hysteresis and involves reversible/irreversible domain dynamics. Apart the classical

\* Corresponding author at: Department of Solid State and Theoretical Physics, Al. I. Cuza University, Bv. Carol I, 11, Iasi 700506, Romania.  
Tel.: +40 32 144760; fax: +40 32 213330.  
E-mail address: [lmtrs@uaic.ro](mailto:lmtrs@uaic.ro) (L. Mitoseriu).

methods of investigating, the more recent one based on the First Order Reversal Curves (FORC),<sup>12,13</sup> related to the Preisach model in ferroics,<sup>14,15</sup> proved its sensitivity to the crystallite orientation, imprint effects in films<sup>12,13</sup> and anisotropic porosity in ceramics,<sup>16</sup> giving also information on the field-dependence of the differential susceptibility.<sup>16</sup> This approach is used here to describe the switching and ac-tunability characteristics in  $\text{BaTi}_{1-x}\text{Zr}_x\text{TiO}_3$  ceramics with two grain sizes: 0.75 and 3.3  $\mu\text{m}$ .

## 2. Experiment

$\text{BaZr}_{0.10}\text{Ti}_{0.90}\text{O}_3$  (BZT) ceramics were prepared by solid-state reaction starting from high-purity  $\text{BaCO}_3$  (Solvay),  $\text{TiO}_2$  (Toho) and  $\text{ZrO}_2$  (Tosoh) that were wet-mixed, dried, calcined at 1000 °C/6 h, re-milled, pressed and then sintered at 1350–1500 °C/2 h.<sup>17</sup> The microstructures were examined by Scanning Electronic Microscopy (SEM, Philips, Model 515). The  $P(E)$  loops and FORCs were recorded under sinusoidal waveform by using a modified Sawyer–Tower circuit. The FORC measurements involve the recording of minor loops between saturation  $E_{\text{sat}}$  and a variable reversal field  $E_r \in (-E_{\text{sat}}, E_{\text{sat}})$ ,<sup>12,13</sup> the polarization along FORCs  $p_{\text{FORC}}^-(E_r, E)$  being a function of the actual and reversal fields  $E, E_r$ . The FORC distribution is defined as the mixed second derivative of polarization with respect to  $E_r$  and  $E$ <sup>12</sup>:

$$\rho^-(E_r, E) = \frac{1}{2} \frac{\partial^2 p_{\text{FORC}}^-(E_r, E)}{\partial E_r \partial E} = \frac{1}{2} \frac{\partial}{\partial E_r} [\chi_{\text{FORC}}^-(E_r, E)], \quad (1)$$

in which  $\chi_{\text{FORC}}^-(E_r, E)$  are the differential susceptibilities along the FORCs. The 3D-distribution  $\rho(E_r, E)$  describes the sensitivity of polarization with respect to the reversal  $E_r$  and actual field  $E$  or, by changing variables, to the coercive and bias fields:  $\rho(E_c, E_i)$ .

## 3. Results and discussions

The structural data demonstrate the formation of pure perovskite phase in all the samples. The samples used in the present study were sintered at 1350 and 1500 °C/2 h. Homogeneous microstructures with average grain size of 0.75  $\mu\text{m}$  (BZT1) and 3.3  $\mu\text{m}$  (BZT2) and relative densities of 90 and 99% were obtained (Fig. 1). The expected differences in the switching and tunability properties result from the combination of grain size and porosity effects. The decreasing grain size causes a reduction of the tetragonality and spontaneous polarization, together with frozen-polarization and “dilution” effects due to the large number of non-ferroelectric grain boundaries.<sup>18</sup> In addition, due to the porosity, the dipolar units located inside a grain or in contact with pores act under different mechanical and electrical boundary conditions.

The FORC data for the two samples are shown in Fig. 2a and b. Remanent polarization of  $\sim 3.4 \mu\text{C}/\text{cm}^2$  for BZT1 and  $\sim 7 \mu\text{C}/\text{cm}^2$  in BZT2 and apparently similar coercivities of around 0.25 MV/m were obtained. The computed 3D-FORC distributions (Fig. 3) show a small bias, i.e. the maximum of the FORC distribution is shifted towards negative bias fields:

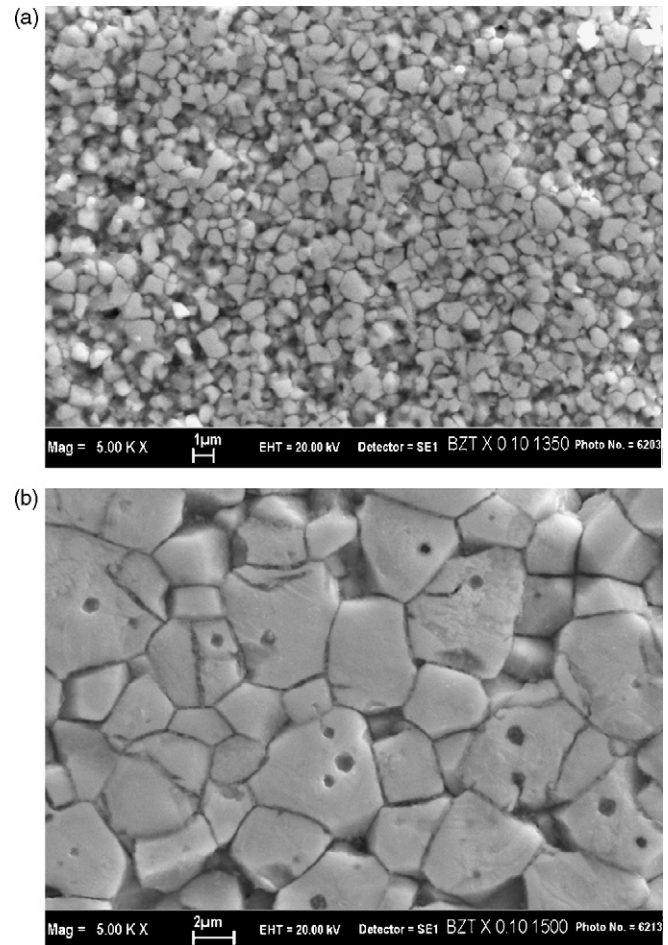


Fig. 1. SEM micrographs of  $\text{BaZr}_{0.1}\text{Ti}_{0.9}\text{O}_3$  ceramics sintered at: (a) 1350 °C (BZT1: 0.75  $\mu\text{m}$ ); (b) 1500 °C (BZT2: 3.3  $\mu\text{m}$ ).

$E_i = 17 \text{ kV}/\text{m}$  in BZT1 and  $E_i = 8 \text{ kV}/\text{m}$  in BZT2. The maximum is located at low coercivities, of  $\sim 5 \text{ kV}/\text{m}$  for both samples, indicating low energy barriers for the large majority of irreversible domain walls movements. Only a small number of dipolar units are switchable under higher fields. Since there is not a net separation between the reversible (along the bias axis  $E_c = 0$ ) and the irreversible (for  $E_c \neq 0$ ) components of the polarization on the FORC distribution as in other ferroelectrics,<sup>12,16</sup> it results that a continuous distribution of energy barriers from zero to non-zero values is characteristic to these BZT ceramics. A similar behavior was found for some BST compositions<sup>13</sup> and is related to the high degree of local compositional inhomogeneity of the solid solutions, giving rise to broad distributed Curie temperatures and coercivities. Therefore, the sample BZT2 is much homogeneous from the switching point of view, i.e. the large majority of the dipolar units are switchable at similar fields, giving rise to a very sharp FORC distribution (Fig. 3b). This is a result of two effects: larger grains and small non-ferroelectric grain boundary volume resulting in switching characteristics closer to the single-crystal behavior; (ii) high density, putting the overall dipolar units into similar boundary conditions. The enlarging FORC distribution by porosity effects was also observed in PZT ceramics with high degree of porosity.<sup>16</sup>

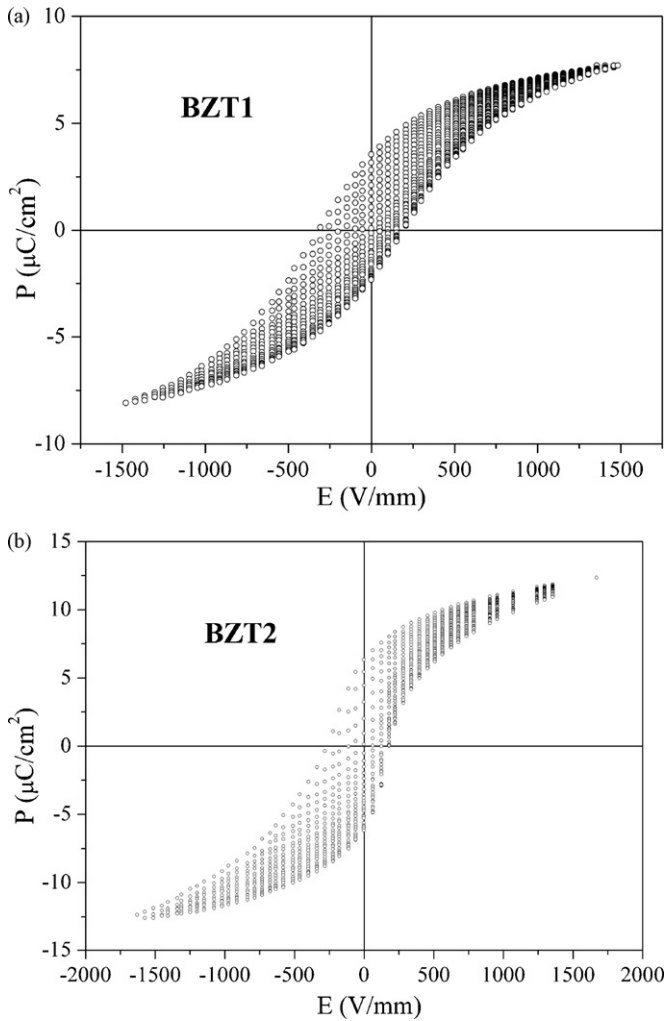


Fig. 2. Experimental FORC curves and major hysteresis loops obtained for: (a) BZT1; (b) BZT2 ceramics.

Another important information available from the same set of the experimental FORCs is the field-dependence of the FORC susceptibility, related to the ac-tunability. The dynamic FORC susceptibility is also a function of  $E$  and  $E_r$ , being also influenced by the mechanical and electrical history of the sample. The maximum tunability is generally obtained for  $E_r = -E_{sat}$ . The comparison between these FORC susceptibilities of BZT1 and BZT2 (Fig. 4) shows that BZT2 has a stronger field-dependence on  $E$  with a sharp maximum at 200 kV/m and a higher ac-tunability. When  $E$  ranges between 0.2 and 1 MV/m, the FORC susceptibility of BZT2 is modified by a factor of 9, by comparison with only  $\sim 2.5$  for BZT1. This is a proof of the strong dependence of the tunability on the ceramic microstructure, particularly on the grain size and porosity. Note that the dc-tunability experiments can give different values for the fields corresponding to the maximum, since in the two types of experiments different dynamics of the domain walls and time constants are involved. Therefore, the FORC analysis is useful to give an idea for the fields required to tune the permittivity in a given range.

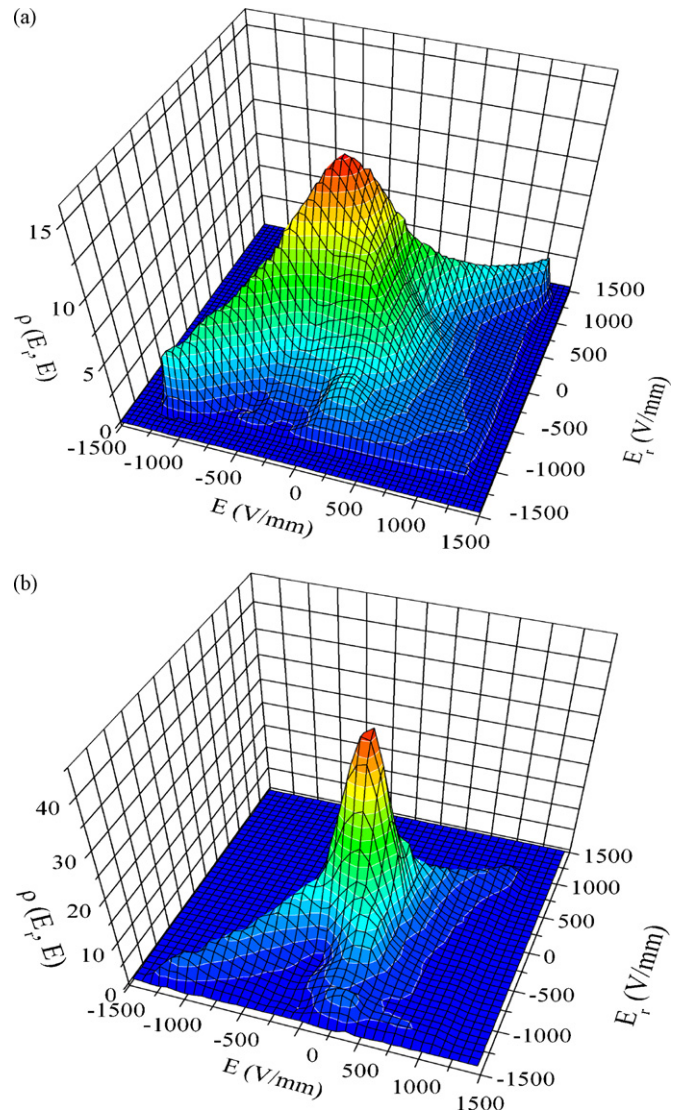


Fig. 3. Three-dimensional FORC distributions computed from the experimental data of Fig. 2 for: (a) BZT1; (b) BZT2 ceramics.

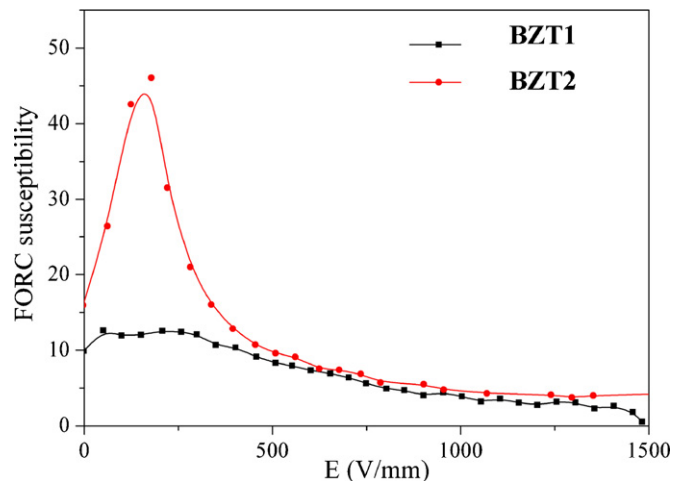


Fig. 4. Comparative FORC susceptibilities obtained on the major hysteresis loops:  $E_r = -E_{sat}$  in the  $BaZr_{0.1}Ti_{0.9}O_3$  ceramics.

#### 4. Conclusions

The ferroelectric and ac-tunability properties of the solid solution  $\text{BaZr}_{0.10}\text{Ti}_{0.90}\text{O}_3$  with grain sizes of 0.75 and 3.3  $\mu\text{m}$  were investigated by means of the FORC method. The main difference in the FORC distributions is the degree of dispersion: a well-localized distribution with a sharp peak for the coarse ceramic, while a more distributed with a lower intensity maximum is characteristic for the fine one, indicating a higher degree of the local inhomogeneity in the fine ceramic. The maximum is located at low fields independently on the grain size and no clear separation between the reversible/irreversible contribution to the polarization are obtained. The FORC susceptibility related to the ac-tunability determined on the major hysteresis loop is very sensitive to the grain size, being much smaller in the fine ceramic. This is due to the pinning of the domain walls by defective areas (grain boundaries, regions in contact with pores, etc.) in the fine ceramic.

#### Acknowledgements

This study was supported by CNCSIS Romanian grants (A and CEEEX) and INSTM Italy (FISR 2002, University of Genoa, Italy) project. The support of the COST 539 Action by STSM-539-01859 at ISTECC-CNR Faenza, Italy is acknowledged.

#### References

- Saito, Y., Takao, H., Tani, T., Nonoyama, T., Takatori, K., Homma, T. et al., Lead-free piezoceramics. *Nature*, 2004, **432**, 84–87.
- Wolny, W. W., European approach to development of new environmentally sustainable electroceramics. *Ceram. Int.*, 2004, **30**, 1079–1083.
- Lines, M. E. and Glass, A. M., *Principles and Applications of Ferroelectrics and Related Materials*. Clarendon Press, Oxford, 1977.
- Böttger, U., Dielectric properties of polar oxides. In *Polar Oxides: Properties, Characterization and Imaging*, ed. R. Waser, U. Böttger and S. Tiedke. Wiley-VCH Verlag GmbH&Co. KGaA, Weinheim, 2005.
- Halder, S., Gerber, P., Schneller, T. and Waser, R., Electromechanical properties of  $\text{Ba}(\text{Ti}_{1-x}\text{Zr}_x)\text{O}_3$  thin films. *Appl. Phys. A*, 2005, **81**, 11–13.
- Simon, A., Ravez, J. and Maglione, M., Relaxor properties of  $\text{Ba}_{0.9}\text{Bi}_{0.067}(\text{Ti}_{1-x}\text{Zr}_x)\text{O}_3$  ceramics. *Solid State Sci.*, 2005, **7**, 925–930.
- Zhi, Y., Guo, R. and Bhalla, A. S., Dielectric behavior of  $\text{Ba}(\text{Ti}_{1-x}\text{Zr}_x)\text{O}_3$  single crystals. *J. Appl. Phys.*, 2000, **88**, 410–415.
- James, A. R. and Prakash, C., Ferroelectric properties of pulsed laser deposited  $\text{BaZr}_{0.15}\text{Ti}_{0.85}\text{O}_3$  thin films. *Appl. Phys. Lett.*, 2004, **84**, 1165–1167.
- Xu, J., Menesklou, W. and Ivers-Tiffée, E., Annealing effects on structural and dielectric properties of tunable BZT thin films. *J. Electroceram.*, 2004, **13**, 229–233.
- Zhi, Y., Ang, C., Guo, R. and Bhalla, A. S., Dielectric properties and high tunability of  $\text{BaTi}_{0.7}\text{Zr}_{0.3}\text{O}_3$  ceramics under dc electric field. *Appl. Phys. Lett.*, 2002, **81**, 1285–1287.
- Hennings, D., Schell, H. and Simon, G., Diffuse ferroelectric phase transitions in  $\text{Ba}(\text{Ti}_{1-y}\text{Zr}_y)\text{O}_3$  ceramics. *J. Am. Ceram. Soc.*, 1982, **65**, 539–544.
- Stancu, A., Ricinchi, D., Mitoseriu, L., Postolache, P. and Okuyama, M., First-Order Reversal Curves diagrams for the characterization of ferroelectric switching. *Appl. Phys. Lett.*, 2003, **83**, 3767–3769.
- Mitoseriu, L., Stoleriu, L., Viviani, M., Piazza, D., Buscaglia, M. T., Calderone, R., Buscaglia, V., Stancu, A., Nanni, P. and Galassi, C., Influence of the stoichiometry on the dielectric and ferroelectric properties of the tunable  $(\text{Ba,Sr})\text{TiO}_3$  ceramics investigated by First Order Reversal Curves method. *J. Eur. Ceram. Soc.*, 2006, **26**, 2915–2921.
- Preisach, F., Über die magnetische Nachwirkung. *Z. Phys.*, 1935, **94**, 277–302.
- Mayergoyz, I., *Mathematical Models of Hysteresis*. Springer, New York, 1986.
- Stancu, A., Mitoseriu, L., Stoleriu, L., Piazza, D., Galassi, C., Ricinchi, D. et al., Investigation of the switching characteristics in ferroelectrics by first-order reversal curve diagrams. *Physica B*, 2006, **372**, 226–229.
- Ciomaga, C. E., Viviani, M., Buscaglia, M. T., Buscaglia, V., Mitoseriu, L., Stancu, A. and Nanni, P., Preparation and characterisation of the  $\text{Ba}(\text{Zr,Ti})\text{O}_3$  ceramics with relaxor properties. *J. Eur. Ceram. Soc.*, 2007, **27**, 4061–4064.
- Buscaglia, M. T., Viviani, M., Buscaglia, V., Mitoseriu, L., Testino, A., Nanni, P. et al., High dielectric constant and frozen macroscopic polarization in dense nanocrystalline  $\text{BaTiO}_3$  ceramics. *Phys. Rev. B*, 2006, **73**, 064114.